

Shore News 2019

ISSUE #2

South Patrick Residents Association
www.spranews.com

YOUR SPRA MEMBERSHIP

It's never too late to renew your membership or to become a new member of your South Patrick Residents Association. SPRA is a volunteer association that works for you in dealing with local government, gives you important information, and works to make community improvements. Visit our website at www.spranews.com to learn more.

SPRA WEBSITE UPDATES

Remember to visit the SPRA website, which will be regularly updated on issues members bring to our attention, as well as progress on various projects from muck removal to lift station construction. The website offers an up-to-date and ongoing release of information to keep us all current. Further, we are working on placing our advertisers' ads on the website to increase their exposure to residents.

GRAND CANAL MUCK REMOVAL PROJECT

SPRA has been working with Brevard County on the Grand Canal system muck removal project over the past 4 years. Our April 8th meeting had some 85 residents in attendance to hear the latest on the project update from Walker Dawson PE, the project manager, to talk about their concerns, and to ask questions. Bids on the project were opened and a contractor has been selected to move forward on the project. There remain details that need to be resolved as the project progresses. Residents who live on the Grand Canal system can sign a waiver to allow the contractor to remove muck within 5 feet of seawalls and docks. A copy of the waiver is posted on the SPRA website.

AREA DIRECTOR UPDATE

SPRA is seeking a member to become Area Director for area 3. The boundaries are as follows: the south side of Sea Park Blvd. on the north, to E. Exeter Street on the south. You may also visit our website under "SPRA Areas" to see the physical boundaries. Rick Mariani, interim Area 3 director, will be happy to answer your questions. Rick is also serves

PRESIDENT
Ayn Marie Samuelson • 773.8167
asamuelson@spranews.com

VICE PRESIDENT
Rick Mariani
501-4080
rmariani@spranews.com

TREASURER
Magi Kyle • 404-900-5767
mkyale@spranews.com

ADVERTISING COORDINATOR
Ayn Marie Samuelson
asamuelson@spranews.com

SECRETARY
Pat Dooley • 321-777-2653
pdooley@spranews.com

COMMUNITY RELATIONS/EVENTS
Laura Walko • 541.0442
lwalko@spranews.com

PET DATABASE
Linda (Lin) Hilliard • 777.0927
lhilliard@spranews.com

Layout and Printing by: Flamingo Printing
flamingoprinting.com • 723.2771

SPRA is a 501 (c) (4) non-profit

as SPRA vice president. In addition, you may contact Ayn at asamuelson@spranews.com for a printout of the area directors' general duties.

Welcome to newly elected Area 1 Director Jayna Jenkins. Her email contact information can be found on the SPRA website and in the Shore News. Contact Jayna with concerns and questions and to become involved in your community.

RESIDENT CONCERNS – Question & Answer

Question 1: Why is the "walk light" for crossing SR 513/ South Patrick so short a duration at the intersection of Ocean Blvd. and SR 513? Residents have difficulty making it across the busy street, especially when cars are turning south from Ocean Blvd. unto SR 513.

Answer 1: Both the Florida Department of Transportation and Brevard County are concerned about traffic flow, but they must first be concerned about pedestrian safety in a designated crosswalk location. If the time is too short for people without difficulty walking, then there is a safety problem. The County has been contacted about the issue, through District 4 County Commissioner Curt Smith's office. The County will work with FDOT to assess the problem. These are the type of issues that should be quickly resolved to ensure safety for our residents.

Question 2: When I walk our dog at the South Patrick Community Park off of Sea Park Blvd., there are dogs being walked by their owners who are not on leashes. Isn't there a leash law in Brevard?

Continued on Page 2

SPRA Community Meeting • David Schechter Center
Monday, JUNE 11, 2019, 7:15 p.m.
SPRA, PO Box 372357, Satellite Beach, FL 32937

By Ayn Samuelson

Answer 2: Yes, Chapter 14 of Brevard County Code of Ordinances states that it is unlawful for a dog owner to permit his/her dog to be at large. This means that a dog who is off the owner's premises, and who is not under the control of the owner by a leash, cord, or chain, is in violation of the law. To maintain physical control, the animal must be on a leash not to exceed six feet at its maximum extension. Physical control means the power to influence/restrict the actions of the animal and to prevent the animal from engaging in aggression toward people and other animals. In addition, Sec. 14-59 states that no animal shall be permitted to defecate/urinate upon public property, or private property, without permission of the property owner. In addition, it shall be the responsibility of the owner or person in control of the animal to dispose of or remove any excretions caused by the animal.

EPA SITE INSPECTION (SI)

The Environmental Protection Agency (EPA) has hired a contractor to carry out a CERCLA (Comprehensive Environmental Response, Compensation and Liability Act) screening assessment in portions of our South Patrick Shores area. The EPA is planning to conduct this Site Inspection (SI), that will focus on areas of past land disturbances north and south of Ocean Blvd., as shown in historical aerial photographs. EPA is in the contracting and planning stage now, and it is expected that it will be summer before samples

are collected by their selected contractor. The EPA will let SPRA and the County know when they have a sampling plan in place. The exact locations have not yet been chosen, but it is estimated that there will be from 20 to 40 samples taken. In addition, EPA's Emergency Response and Removal program conducted a limited soils investigation of one residential property within South Patrick Shores, in response to reported discovery of debris and an odor. The March 19, 2019, US EPA Memorandum report indicated that, while chromium and arsenic were found in all of the soil samples taken at the residential site, the concentrations were not at a level that exceeded their Removal Management Levels, and removal did not appear to be warranted at this time. The results from this sampling will be folded into the CERCLA SI report scheduled for Summer 2019 for full disclosure. EPA stated that it would keep SPRA in the loop regarding the scope of the screening going forward, which can be placed on our website for residents to stay informed of the progress, and ultimately, to access the CERCLA SI results.

SR A1A MID-BLOCK CROSSWALKS

Florida Department of Transportation (FDOT) repaved 8.7 miles of SR A1A from Fifth Avenue in Indian Harbour Beach, which is north of the Pineda Causeway. This project added new sidewalks, bike lanes, drainage improvements, crosswalks (at Ocean Blvd. and SR A1A), wheelchair-

A-1-A BIKE & MOWER

3G



Power Washer
Rentals



3G Bikes.com
Pedal Forward Design

\$44.95/day

VORTEXX
PRESSURE WASHERS

SNAPPER

TORO

Wright

ECHO

We service most makes of power mowers

A-1-A Lawnmowers.com
1346 A-1-A Satellite Beach
321-773-2225

"Nextdoor Neighborhood Favorite"

 **Nextdoor**

 **Atlantis**
REAL ESTATE OF BREVARD INC.

CHERYL ALYEA
President

 Multi-Million

 **REALTOR[®]**
MLS

Office: (321) 777-3060

E-Mail: CAlyeaRE@aol.com

2194 Highway A1A • Suite 310 • Indian Harbour Beach, FL 32937

accessible curbs, concrete pads at Space Coast Area Transit stops, and the mid-block crossings. FDOT installed 18 mid-block pedestrian crossings along State Road A1A, although our South Patrick Shores unincorporated area selected no mid-block crossing sites. Some of the sites, like those in Satellite Beach, which chose six mid-block crossing locations, will have the pedestrian-activated, flashing beacons to warn motorists that pedestrians are in the mid-block crosswalk and getting ready to cross SR A1A.

Critical questions need to be answered:

- Could these new crosswalks increase the danger for pedestrians and motorists?
- Will the sheer numbers of mid-block crossings and their flashing beacons startle and confuse drivers?
- Must we all be required to "learn" how to drive and cross the road differently along SR A1A?
- How will these changes impact traffic safety along SR 513/ South Patrick in our residential areas?

The push-button crosswalk beacons were supported by the Space Coast Transportation Planning Organization (SCTPO)

and FDOT, although other officials expressed legitimate concerns. Some Brevard County and city officials, who discussed concerns at an April 2019 SCTPO meeting, say the devices present new safety hazards.

This discussion addressed the following:

- The flashing beacons are activated by pedestrians, but they do not require cars to stop. The goal is to warn the motorist that a pedestrian is in the crosswalk.
- Educating pedestrians and motorists is crucial. It is unlawful to step out in front of a car, and it is illegal for a motorist to strike a pedestrian in a crosswalk.
- If a large vehicle stops at the crosswalk, views of the other lanes can be blocked for drivers and walkers.
- At the Strawbridge Avenue crosswalk, it was noted that sometimes motorists drive through without stopping.
- FDOT traffic engineers will evaluate the SR A1A crosswalk beacons after they are functional, after-which new data can be collected. Evaluation will include pedestrian and traffic safety and a speed study.

The Space Coast Transportation Planning Organization

SATELLITE BEACH ART CLASSES

At the Satellite Beach Art Studio with Instructor, Margaret Steciuk
\$80 per month for 4 classes, all materials included in fee.



Original local beach artwork available year-round.

Satellite Beach Art Studio, in the Coquina Point Office Complex
1170 A1A, Suite 8, in Satellite Beach, FL 32937
Call 321-704-5964 for scheduling or
E-Mail margaret@mpmconsultants.biz

Licensed & Insured

HNJ



J. Calandra - Handyman, LLC
"Let Me Fix It For You!"

Free Estimates
Serving The Beaches & Melbourne

Cell Phone: 321-960-5355
Alt No. 321-288-5521

Complete Air & Heat, Inc.

Same family serving the Beaches since 1975

DAIKIN

Fully Licensed & Insured –
CAC058499, CAC1817707
& CAC1818674



• Service • Installs • Filters •

1395 S. Patrick Dr., Satellite Beach

321-773-8434



(SCTPO) is aware of the legitimate safety concerns related to the new mid block crosswalks and plans to take action related to these concerns..

- The SCTPO stated that they are planning a meeting with FDOT and the municipalities all along A1A to understand the context-sensitive solution strategies/projects that would need to be implemented to get speeds lowered.
- It was stated that a “culture shift” is needed so that pedestrians and motorists learn to interact safely. This means that motorists and pedestrians must get used to a “different roadway context on this beachside corridor.”
- The SCTPO is also looking into a new Safety Program to develop for the county. How much time and funding will a proposed Safety Program entail?
- Safety has always been the issue pushed by FDOT, but if the end result leads to just the opposite, then such outcomes must be heeded.

SPRA Impacts: We are waiting to see how the mid-block crossings will impact the only other north/south road on our barrier island, SR 513. What will be the actual impacts on pedestrians and motorists in our primarily residential areas along the SR 513/South Patrick Drive corridor with an unhampered 45 mph speed, even while speeds are slowed along SR A1A. There is concern regarding the design, pedestrian and driver safety, and the potential for impending, unintended consequences due of these crossings. If the true intent was to slow traffic, would a decrease in the posted speed have been a more effective solution from the beginning?

LIFT STATION S-04 REPLACEMENT PROJECT

SPRA asked several questions about the contract for the new S-04 lift station that will be built to the east of Ibis Lane in North Waterway Estates.

SPRA’s Question to Brevard Utilities Construction Manager: Please advise as to which contractor was selected for the S-04 project in North Waterway Estates, as well as the projected start date. SPRA appreciates that your department worked with the state to have the S-04 location moved to the east side of Ibis Lane, as that appears to allow less impact on residents and their properties and may also reduce costs for the project.

Brevard Utilities Response to SPRA: The Contract Execution period that follows the Notice of Award takes approximately one month. When the Contracts are fully executed, the Pre-Construction meeting can be scheduled and shop drawings will be under review at this time. I would estimate that construction starts in mid-July 2019. The apparent low Bidder for the Lift Station S-04 Replacement project is Danus Utilities, Inc.

BREVARD COUNTY HIGHLIGHTS

Look for Brevard County news and updates on the SPRA website at www.spranews.com We are working to keep you better informed in a timely manner regarding issues that impact our area. The a link for the newest Brevard County Quarterly Report is posted on our website.

RE/MAX
Outstanding Agents
Outstanding Results®



Clinton Davis

Direct: 321.426.0234

Email: ClintonDavis@remax.net

www.ClintonDavis.realtor

Call or Email for a free home pricing analysis



FLORIDA STATE HIGHLIGHTS

State Attorney Phil Archer – Facebook Online Scam

We've told you about phony government grant scams on Facebook. The Better Business Bureau is reporting that scams are being hatched to promote fake charities. **Here's how it works:** You are scrolling through Facebook when a message pops up in Facebook Messenger. The "friend" claims to be raising money for a charity and asks you to make a donation. You'd normally be suspicious of an unknown charity. But the message is coming from someone you know and trust. Or is it? Scammers are hijacking a person's Facebook profile image and sending these messages to all their friends. The charity doesn't exist, and if you pay, your money is gone. **Tips to avoid this scam:** Check the profile: Click through messenger to the Facebook profile. You'll most likely find it's a fake. Press for details: Ask questions to confirm you are actually talking to someone you know. Hide Your Friends List: If scammers can't see your friends list, your less likely to be targeted. Report it to Facebook. Do some research: Look up the charity's name and if you can't find a website, it's most likely a fake. To learn about online charity fundraising, check out how legitimate charities are evaluated on Give.org.

State Senator Debbie Mayfield

Senate Bill SB 436: Use of Vessel Registration Fees expands the authorized uses of the county vessel registration fees to include channel and other navigational dredging; the construction, expansion, or maintenance of public boat

ramps and other public water access facilities; and associated engineering and permitting costs.

SB 168: Federal Immigration Enforcement - Senate Prohibiting sanctuary policies; requires state entities, local governmental entities, and law enforcement agencies to use best efforts to support the enforcement of federal immigration law; authorizing a law enforcement agency to transport an alien unlawfully present in the United States under certain circumstances.

TIPS FROM RICK, SPRA VP

Don't be an unlicensed Mosquito Breeder or Lessons learned from an Ambush. A few years ago, I bought a home in our SPRA area and went into my yard to get some plant pots. A cloud of angry, buzzing mosquitoes attacked, and I was overwhelmed by the numbers and ferocity of the attack. I realized that my plant pots were stored so that rain water could collect in them, and that I had become a mosquito breeder.

The Florida rainy season will begin soon, with May 15 through October 15 designated as dates for the rainy season. Many of us will unintentionally start breeding mosquitoes, and here are some tips that can curtail that.

- Insure you have no standing water around your house, as most eggs hatch into larvae within 48 hours after contact with standing water. The mosquito larvae must live in water for 7 to 14 days, depending on the water temperature. The next stage is the pupa, which must live in water from 1 to 4 days, depending upon the species and temperature. So, never allow any water to accumulate for 9 days, or you will grow a new



We understand.

...which is why we provide you
with the most efficient service
in protecting it.

 Complete Choice Insurance

321.888.3900

www.CompleteChoiceInsurance.com

crop of blood-thirsty mosquitoes.

- Check your garden furniture and ornaments for areas that can hold water and drain or flush weekly.
- Don't over-water your lawns and gardens, and fix faucets, AC units, and hoses that can leak and puddle.
- Get some fish for your pond or use mosquito dunks. Mosquito fish are native to Florida, and they eat larvae that hatch from eggs. Some agencies may supply mosquito fish to residents to put in ornamental ponds, ditches, and similar sites. Dunks are doughnut-shaped blocks that contain Bti, a bacterium pesticide that kills mosquito larvae, but is non-toxic to animals and fish. Dunks dissolve slowly in water and are available at hardware/garden stores. <https://www.brevardfl.gov/MosquitoControl/Home>
- Clean and chlorinate your pools like clockwork, and check that nearby vacant homes with pools are maintained. Don't over-water your potted plants, and drain saucers weekly or

flush with a garden hose.

- Water can collect in fence posts, but you can cap them. Cover or turn all types of containers upside down. Drill drainage holes in tire swings and playground equipment where water might collect. Clean or hose out your birdbaths weekly. Empty accumulated water from boats, canoes, and trailers.

NATURE CALLS – HONEY BEES

Did you know that 20 to 25 percent of what we eat comes from the efforts of honey bees? Honey bees are a keystone species, and without them, every four or five bites of food we eat would disappear. To that end, University of Florida's new 16,000 sq. ft. facility will increase the existing lab's research, instruction, and extension efforts. It is indicated that nothing like this collaboration among hobbyist beekeepers, commercial beekeepers, and a university exists anywhere else



TREE 21
SERVICES

Locally Owned & Operated
Satellite Beach, FL serving all of Brevard

321.795.1420
Professional, Reliable, Local

- FREE ESTIMATES
- Tree Trimming & Pruning
- Tree & Bush Removals
- Sod & Landscape Installation
- Stump Grinding
- FREE HAULING OF DEBRIS


LICENSED AND INSURED

JERRY'S ACTION AUTO REPAIR, INC.
Brakes • Wheel Alignment • Tune-Ups
Computer Controls • Engines • Transmissions
Electrical • Air Conditioning

JERRY DAVIS
Owner / Operator

777-3888 • 773-1352
www.jerrysactionautorepair.com

688 South Patrick Drive, Satellite Beach, FL 32937




HENNESSY
REALTY
"Exceed Your Expectations"

Vera Hennessy
Licensed Real Estate Broker

321.693.6629
verahennessy@gmail.com
www.hennessyrealty.net

712 South Patrick Dr.
Satellite Beach, FL 32937




BREVARD HEALTH
Advantage

Turning 65?
Medicare Advantage & Medicare Supplement plans

Under 65, new to area?
Individual and family health insurance

We've got your solution

321-574-6440
Located in the Sea Park Plaza
574 Highway A1A
Satellite Beach, FL 32937
Pat Shankle: Broker -Owner lic D087093

Please patronize our advertisers and tell them that you saw their ad in your **SHORE NEWS!**



in the country. The lab is focused on learning about how to keep our honey bees alive and healthy to benefit us all.

Florida's native bees, including bumblebees, sweat bees, carpenter bees and others also pollinate crops, but the workhorse is the honey bee, and there is only one species of honey bee in the U.S. Most of what we know about honey bees comes from beekeeper information about bees who live in those white hive boxes.

Sometime in 2006, bees were leaving their colonies and dying due mainly to the Varroa mite that feeds on bees. These mites have been called the cancer of the honey bee population. Currently, there has been a boom in beekeeping, and new hives have lessened the die-off impacts. In addition to the mites that affect honey bee health, bee nutrition, queen health, and the impacts of pesticides are variables that can impact honey bees.

In order for honey bee nutrition to be top notch, they need to collect nectar and pollen from their forage from a variety of flowers, which allows a smorgasbord for a balanced diet. The nectar becomes honey, which supplies carbs for energy, which acts as fuel for the bees. Bee bread is made from the collected pollen, which contains the protein and other nutrients bees need for survival and health. In addition, it is also more likely that healthy bees will have a lower disease incidence.

Whether you are a homeowner, local government, or a utility company, when it comes to removing bees on your property or near your facilities, please do not kill them. Instead, do everything you can to have them carefully removed by a beekeeper. To learn more about honey bees and get information about beekeepers, visit the UF/IFAS Honey Bee Research & Extension Lab website at <http://entnemdept.ufl.edu/honey-bee>

SANDY PAWS CLEANING
PROFESSIONAL HOUSEKEEPING
Weekly specials
321-710-8366
Sister company of
Sandy Paws Pet Sitting



Construction Cleanup
 Demolition
 Bobcat Service
 Trash Removal

JAY RAVEL
321-777-5268



JR'S BOBCAT SERVICE, INC.
 RESIDENTIAL • COMMERCIAL • ESTATE



Welcome to the 45th Space Wing Protestant Chapel

*Providing **Active Duty and Retired Military Service Members**
 and their **Families** Non-Denominational Protestant Services and Programs.*



Sunday Services

Traditional Worship Service: 0900 – Seaside Chapel, 357 Titan Rd, Patrick AFB, FL 32925
 Contemporary Worship Service: 1100 – South Patrick Chapel, 84 Harrier Ave, Satellite Beach, FL 32927

Ministries

Feed Your Family/Faith Bible Studies; Men; Women; Youth; Prayer;
 Praise and Worship; Missions; Religious Education; Usher/Greeters; Christian Fellowship.

Register NOW for ROAR!! Vacation Bible School 2019

3yrs to 5th Grade

Monday, 10 June – Friday, 14 June, 0900-1200, South Patrick Chapel

Email 45SWHCall@us.af.mil for more information.

Phone: 321-494-4073, Cynthia Watkins, Protestant Parish Coordinator

*Check out the Current Activities & Events Calendar on the
 Patrick AFB Protestant Chapel Facebook Page!*

Privileged Communication – Total confidentiality in counselling with a Chaplain.

The Area Director is the voice for your area
Please report any questions or concerns
directly to your Director.

WHO INFLUENCES LAWMAKERS - Follow the money
State records show that right now, there are 10 registered lobbyists for every legislator. Lobbyists include former lawmakers, as well as former state officials. Lobbyists seek to ensure that state legislators pass laws that benefit the clients they represent, as their focus is on influencing policy and lawmaking. This type of work can be very lucrative for lobbyists, while it can also be beneficial for beefing up the reelection campaign funds of legislators and other office holders.

This is not a quick process, as the corporate lobbyist may have chosen an aspiring local official, who possesses political ambitions, to run for state legislature. The lobbyist may also secure others to help fund the potential candidate's campaign, as well as guide the candidate through influential social and political circles. Big business, utility companies, and other well-funded entities have the dollars to grease the political machinery.

Lobbyists are required to file compensation reports disclosing how much they get paid and who paid them, but they have only to list a range of dollars, not an exact amount. For example, the low end is from \$1 to \$9,999, while the high end is \$50,000 plus. These reports fail to give the full picture about the actual dollars involved or the behind-the-scenes process.

In addition, Political Action Committee (PAC) funds hide unrestricted/unlimited campaign contributions from public view, and many of these PACs have created clever names, that on the surface, seem to demonstrate concern or a vision such as: PAC to the Future, Tomorrow Is Meaningful PAC, Cultivating Leadership for Environmental Action Now, and Everybody Counts, Everybody Matters PAC. Big money donors can exert undue influence over amendments and votes, whereas the ordinary citizen learns that he/she cannot compete in this world, as the playing field is not level when it comes to politics and money.

Research Credit to Julie Hauserman, The Florida Phoenix,

RE/MAX

Elite

Todd Ostrander, P.A.

HALL OF FAME PRODUCER

Top 1% of Brevard County Agents

445 Fifth Ave.
Indialantic, FL 32903

Direct: (321) 749-8405

Fax: (321) 775-0691

Todd@DoorToTheEastShore.com

www.DoorToTheEastShore.com

Each Office Independently Owned and Operated.



South Patrick Baptist Church

Pastor Al Evans

Sunday
9:30am Bible Study
10:45am Worship Service



Wednesday
7:00pm Bible Study/Prayer
7:00pm Youth Group

343 South Patrick Drive * Satellite Beach * FL 32937

321-773-8183 * southpatrickbc@gmail.com

www.sopatrikbaptchurch.com



Personalized Pest Control

NO Bugs NO Termites NO Worries

Beachside
Termite and Pest Control

Serving all of Brevard County

Pest Control Termite Control Mosquito Control

www.Getbeachside.com

321-750-4100

SATELLITE BEACH PUBLIC LIBRARY
Adults

Friday, June 7, 12:00pm, Friends book sort, help sort the donations the library receives, some lifting.

Monday, June 10, 2:00pm, Friends Board Meeting, open to the public.

Friday, June 14 & 28, 9:00am, Beachside Strummers Ukulele Club, listen or join in.

Monday, June 24, 1:00pm, Barbara's Book Chat, Where the Crawdads Sing by Delia Owens.

Children & Teens

June and July - A Universe of Stories Summer Reading Program, some require sign-up for select age groups.

Maker Mondays are June 3, June 17, July 1, August 5 at 2:00pm, for ages 8-12.

Teen Tuesdays are at 6:00pm, for ages 12-17.

Program Wednesdays are at 10:00am, pick up a ticket one week in advance, for ages 5-12.

Wednesdays, Junior Builders Clubs at 3:30, for ages 5 +.

Story Time Thursdays are at 10:00am, for ages 2-5.

Saturday, June 15, 1:00pm – Read to a Dog with Space Coast Therapy Dogs, register, for ages 5 +

To place an Ad in the Shore News, contact Ayn Samuelson, Advertising Coordinator, at 321-773-8167 or email asamuelson@spranews.com.

AD SIZE	ANNUAL
Business Card	\$115
Double Business Card	\$225
Triple Business Card	\$335
1/3 Page	\$395

*Uplifting Lives. Uplifting Each Other.
Uplifting Our Community.*

Serving All of Brevard County
for over 40 years.

For more information
(321) 269-4240
HospiceOfStFrancis.com



Brevard's only independent, not-for-profit hospice.

LICENSED

INSURED

CREATE SCAPES
LANDSCAPE DETAIL SERVICES
321.307.0892

Mention this Ad for a FREE 1 hour Staging
Consultation with signed Listing Agreement



Michelle McKinney
REALTOR®

mmckinney719@gmail.com
321.537-4706



321 Home Team

The Key to Your Future
RE/MAX Elite

www.321HomeTeam.com



Karin Mann
REALTOR®

karinmann321@gmail.com
321.961.7672

AREA 1 ►

JAYNA JENKINS • jjenkins@spranews.com

- I'm Jayna Jenkins, your new Area 1 director. Please email me with your concerns or questions.
- All is well in Area 1, with no new issues to report.
- Please nominate a neighbor for yard of the month.

AREA 2 ►

KREATHA HASTON • khaston@spranews.com

- Yards submitted for YOM are greatly appreciated.
- Get involved in your community with SPRA.

AREA 3 ►

RICK MARIANI interim • 501-4080 • rmariani@spranews.com

- Nominations for YOM are welcome.
- It's never too late to mail in your Membership Dues to help SPRA work for you.

AREA 4 ►

MARILYNN COLLINS • 773-8490 • mcollins@spranews.com

KREATHA HASTON • khaston@spranews.com

- Lake Shepard residents please refrain from parking in the entry/island on the west end concrete slab, as that is County property used for lift station. Brevard County has been notified of this issue.
- The County is looking into the possibility of the placing a Yield Sign at the South Waterway entrance. Stop signs placed on Coral Reef Drive, north and south of the entry, are also

feasible, as this area has become dangerous for pedestrians and drivers alike.

- We encourage you to attend our SPRA meetings and welcome recommendations for Yard of the Month.

AREA 5 ►

KELLI PETRONE • kpetrone@spranews.com • 321-693-9043

- Board members and officers voted to approve the proposed landscaping plan for North Waterway entrance. We will be moving ahead with the planting of three Christmas palms with County assistance and with volunteers to accomplish the remainder of the planting task and beautification. Contact me if you want to help.
- SPRA supports the beautification in our area and our working partnerships with the County, while also involving volunteers to help move a project forward for the best use of our resources.
- Brightening up the road right of way area at the end of Skylark along the Grand Canal is being discussed. Other similar areas in the area provide examples for reducing the cluttered look without promoting people to congregate at a location.
- Please contact me with any information, issues, questions, or if you would like to nominate a yard of the month.

AREA 6 ►

DONNA MORRIS • 321-253-2305 • dmorris@spranews.com

- Please submit YOM nominations.



**Paul & Beth
Frommann
TEAM**

Buying or selling a home?
Call for free, no obligation
information!

Realtor/ Broker Associate

BEACHSIDE & WATERFRONT



SPECIALISTS

USAA, Military & Cartus

Relocation Certified!



PARADISE

"The Best Move You'll Ever Make"

**3
2
1 591-0111**

www.FloridaBeachSide.com

FREE Estimates

• Clean-Ups
• One Time Cuts
• Monthly Service

**Corey's
LAWN CARE**

Have your lawn manicured
by your favorite High School student

**Satellite Beach, FL
Call 321-697-9602**

DAVID SWIHART ROOFING, INC



Reg. #RC-29027477
Lic. 10-RF-CT-00082

1705 Southland Avenue
Melbourne, FL 32935

**All Types
Roof
Tile
Shingles**

Office. (321) 773-0364
Office. (321) 757-3866
Fax. (321) 773-0135
davidswihartroofing@gmail.com

New Construction
Reroof's • Repairs
Maintenance

Yard of the Month winners are entitled to a FREE MOWER BLADE SHARPENING courtesy of A-1-A Lawnmower Shop. Be sure to bring the newsletter with you when you visit the shop.

Please contact your Area Director to nominate a yard for Yard of the Month.



~ AREA 3 ~

Jason & Krissy Powell, 650 Second Avenue

SPRAYOM

Area 1: Mark & Kathy Nathan, 160 Egret Drive

Area 2: Ryan & Kerry Clapper, 340 Sea Gull Drive

Area 3: Jason & Krissy Powell, 650 Second Avenue

Area 4: Cassidy & Abby Marks, 201 Coral Reef Drive;
Darren & Crystal Van Alstine, 205 Coral Reef Drive

Area 5: Eddie & Christy Rutledge, 484 Penguin Drive

Area 6: Don & Sharie Emery, 413 Lighthouse Landing



**Holy Apostles
Episcopal Church**

*Proclaiming the Risen and Active Lord
~ With us, In us, and For us ~*

Please Join Us

Services

Rite I - **Sunday 8:00 AM**

Rite II - **Sunday 10:30 AM**
(Nursery Provided)

Rite III - **Saturday 5:00 PM**

Rector

Rev. Todd Schmidtter

321-777-0024 • holyapostles-sbfl.org
505 Grant Avenue, Satellite Beach, Florida 32937

Licensed & Insured

11-PT-CT-00103

KEENAN
PAINTING
Interior/Exterior Home Painting

GREGORY KEENAN
President

Cell (321) 544-1220
Office (321) 794-4880
Fax (321) 259-9005
E-mail Greg@KeenanPainting.com

All About ElectricCal, LLC

Residential • Commercial • Industrial
Installation • Repair • Automation

Cal Hines

Master Electrician & Owner

321-480-4151
Licensed & Insured

Cal@AllAboutElectricCal.com
Lic. No. ER13015167

Ethanol Free Gas is HERE!

CHARLIE'S AUTO REPAIR SHOP

Your Honest, Reliable, and Affordable
Complete Automotive Repair Facility!

*Major/Minor Auto Repair
*Wheel Alignments
*Towing
*Propane

*Complete Diagnostics
*Air Conditioning
*Storage
*Diesel

**690 South Patrick Drive, Satellite Beach
777-5371**

*Beer/Wine *Propane
*Ice *Bait
*Lottery *U-Haul

Charles Thomas
Master ASE Certified Auto Tech.
Owner since 1990

Local UHaul
Dealer



24 HOUR TOWING



Scott Butler
JUNK CAR REMOVAL
CASH PAID \$50.00 & UP
We Tow Any Car Truck or Van
SAME DAY SERVICE

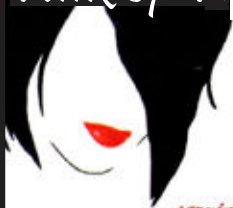
S.B. TOWING

140 Tomahawk Dr., #58
Indian Harbour Beach, FL 32937
(321) 777-8479

PRSR STD
ECRWSS
U.S. POSTAGE
PAID
EDDM RETAIL

Local
Postal Customer

Talk of The Town Hairstylists



565B Jackson Avenue
Satellite Beach,
Florida 32937

.....serving the community since 1974

Zena M MacLean
Owner/Operator

321-773-8571
totthair@aol.com



Brevard Federated Republican Women

PO Box 410143, Melbourne, FL 32941 (321) 727-1212

BrevardFederatedRepublicanWomen.org

JOIN US!

Become a more informed voter.
Become more educated on issues.
Support candidates in local and national elections.
Support the military.
Hear powerful speakers.
Socialize with like-minded individuals.
Keep current with timely e-mail & monthly newsletters.

DURWARD'S
AIR & HEAT

REFRIGERATION • ICE MACHINES • POOL HEATERS

Durward Knowles

Cell: 321-704-5553
Office: 321-779-3156
Fax: 321-622-5601

435 Atlantis Drive
Satellite Beach, FL 32937
License #CAC1818372



Worldwide Cruises and Tours
ITALY SPECIALIST

LORI IANNUZZO

CLIA Elite Cruise Counselor & Luxury Cruise Specialist

321.406.0741 or 321.773.0126
loricruisestheworld@yahoo.com

Florida Seller of Travel # ST37278



**BUYING
OR SELLING
A HOME?**

Dream with your eyes open.



Clinton Davis

Your eyes in
Satellite Beach

RE/MAX AEROSPACE REALTY
321.426.0234 (Direct)
clintondavis@remax.net
<http://www.clintondavis.realtor>